

## Data and Information for Marine Planning

Charles Green  
Coastal Manager  
The Crown Estate



## The Crown Estate Act 1961

- "To maintain and enhance the value of the estate and the return from it with due regard to the requirements of good management"
- Our 3 Core Values:  
Commercialism, Integrity and Stewardship



## Contents

- Introduction to The Crown Estate
- The Marine Estate
- Data and Information for marine resource management and planning at The Crown Estate
- Conclusion



## The Crown Estate now



- 2007 capital value of £7bn
- Net revenue all paid to Treasury for benefit of all UK taxpayers
- £200m in 2006/07



## The Crown Estate includes:

- Urban Estate - Substantial blocks of commercial and residential property
- Rural Estate - Approximately 110,000 hectares of agricultural land
- Marine Estate - 55% of the foreshore and almost all the seabed out to the 12 nautical mile limit
- [www.thecrownestate.co.uk](http://www.thecrownestate.co.uk)



## The Crown Estate:

- is a landowner not a regulator
- is not part of Government but we work closely with Government, devolved administrations, statutory bodies etc
- has a UK remit



## The Marine Estate

- Approx. 17,250km of foreshore (55%)
- The territorial seabed (out to 12 nautical miles) covers over 24 million acres
- Rights to explore and exploit the natural resources of the Continental Shelf (<200 nautical miles), excl oil, gas, coal
- The Renewable Energy Zone (REZ)



## Coastal and Marine Interests in Northern Ireland

- Foreshore ownership considerable
- 1 local Managing Agent
- Foreshore leases and agreements
- Commercial interests in marinas, jetties, gas storage
- Marine Renewables: MCT Strangford Lough
- Stewardship: Strangford Navigational Markers  
Castle Espie Education Room



## The UK Marine Estate income is derived from:



### OFFSHORE

- Marine Aggregates
- Pipelines and Cables
- Renewable Energy

### COASTAL

- Foreshore leases
- Moorings, Marinas, Ports
- Aquaculture



## Seagen Strangford Lough

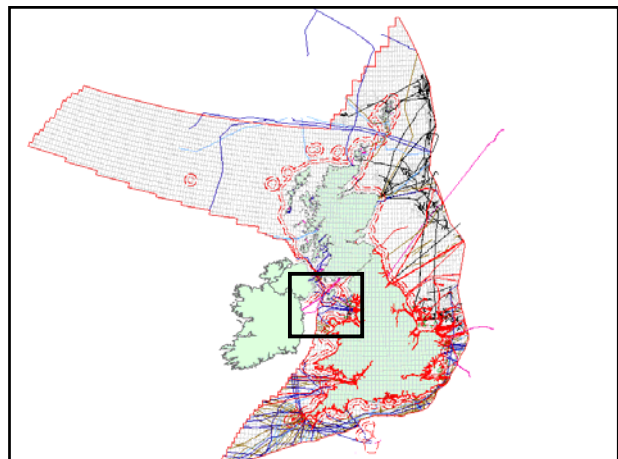


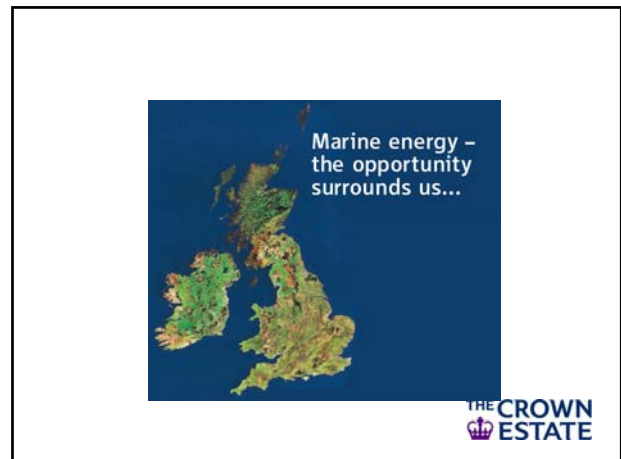
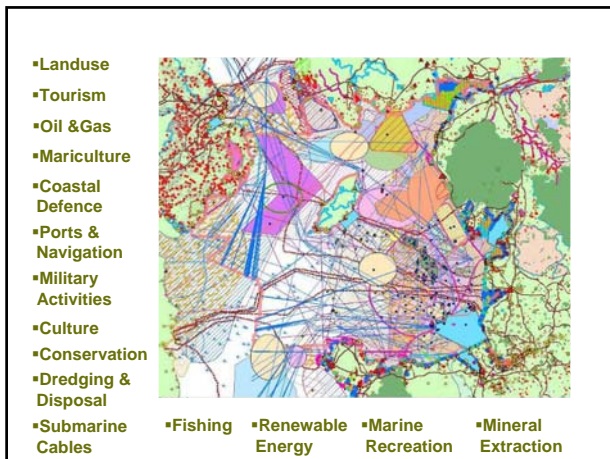
## Business performance

- 2007 income £38.3m; valuation £337m

| Offshore Business split: | £     | %  |
|--------------------------|-------|----|
| • aggregates             | 15.8m | 41 |
| • cables & pipelines     | 9.2m  | 24 |
| • renewables             | 0.7m  | 2  |
| • aquaculture            | 0.8m  | 2  |

Future commercial activities....  
gas storage, carbon capture....





**The Crown Estate and Marine Planning and Resource Management**

Competence in effective estate management – a UK remit

Commercial arrangements for leasing/licensing/permissions

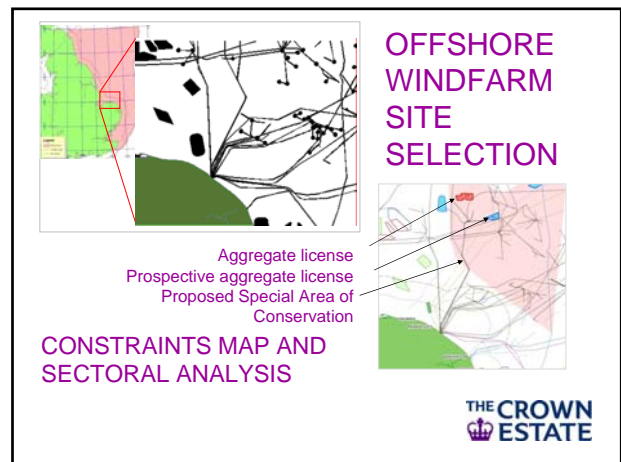
**GIS applications**

**Data and Information**

**Science and research**

Stewardship – good management

Long term view (sustainability)





**The Crown Estate's Marine Resource Management tool aims to**

Optimise The Crown Estate's marine assets, balancing societal, economic and environmental considerations.

Complex risk modelling using data rich GIS platform translates policy and business objectives into prioritised area of sustainable development



- Data and information requirements**
- **Policy Objectives**
  - **Business areas, competing and conflicting demands for space/resource**
  - **Potential future allocation of marine activities based on resources**
  - **Map constraints:** technological  
physical  
environmental  
social
- 

### Sector specific understanding

- Sector specific requirements\*\*
- Data Quality, Processing and Correction (formats)
- Liaison with suppliers and updates
- Data Licensing
- Metadata
- Data redundancy



- Resource mapping and assessment
- Processes for managing complex activities
- Strategies for future activities
- Preferred areas for development based on risk and economic modelling
- Data capture and research
- Analysing interactions among environmental, infrastructure and future uses
- Integrating principles of sustainable development
- Commercial leasing arrangements
- Value creation for UK beneficiaries



### Research and Development

- Foundation study
- Offshore transmission
- Wave buoy data network
- Energy extraction study with CCW
- COWRIE Data Plan



[www.offshorewindfarms.co.uk](http://www.offshorewindfarms.co.uk)



### Questions and discussion

Charles Green

[Charles.green@thecrownestate.co.uk](mailto:Charles.green@thecrownestate.co.uk)

[www.thecrownestate.co.uk/marine](http://www.thecrownestate.co.uk/marine)



### Summary

Marine Resource Management at The Crown Estate is used to provide a strategic, integrated and forward looking framework to achieve optimal sustainable development and resource use.

To meet future challenges we are enhancing capability in:

